

GEORGIAN MEDICAL NEWS

ISSN 1512-0112

NO 12 (345) Декабрь 2023

ТБИЛИСИ - NEW YORK



ЕЖЕМЕСЯЧНЫЙ НАУЧНЫЙ ЖУРНАЛ

Медицинские новости Грузии
საქართველოს სამედიცინო სიახლენი

GEORGIAN MEDICAL NEWS

Monthly Georgia-US joint scientific journal published both in electronic and paper formats of the Agency of Medical Information of the Georgian Association of Business Press.
Published since 1994. Distributed in NIS, EU and USA.

GMN: Georgian Medical News is peer-reviewed, published monthly journal committed to promoting the science and art of medicine and the betterment of public health, published by the GMN Editorial Board since 1994. GMN carries original scientific articles on medicine, biology and pharmacy, which are of experimental, theoretical and practical character; publishes original research, reviews, commentaries, editorials, essays, medical news, and correspondence in English and Russian.

GMN is indexed in MEDLINE, SCOPUS, PubMed and VINITI Russian Academy of Sciences. The full text content is available through EBSCO databases.

GMN: Медицинские новости Грузии - ежемесячный рецензируемый научный журнал, издаётся Редакционной коллегией с 1994 года на русском и английском языках в целях поддержки медицинской науки и улучшения здравоохранения. В журнале публикуются оригинальные научные статьи в области медицины, биологии и фармации, статьи обзорного характера, научные сообщения, новости медицины и здравоохранения. Журнал индексируется в MEDLINE, отражён в базе данных SCOPUS, PubMed и ВИНТИ РАН. Полнотекстовые статьи журнала доступны через БД EBSCO.

GMN: Georgian Medical News – საქართველოს სამედიცინო სიახლენი – არის ყოველთვიური სამეცნიერო სამედიცინო რეცენზირებადი ჟურნალი, გამოიცემა 1994 წლიდან, წარმოადგენს სარედაქციო კოლეგიისა და აშშ-ის მეცნიერების, განათლების, ინდუსტრიის, ხელოვნებისა და ბუნებისმეტყველების საერთაშორისო აკადემიის ერთობლივ გამოცემას. GMN-ში რუსულ და ინგლისურ ენებზე ქვეყნდება ექსპერიმენტული, თეორიული და პრაქტიკული ხასიათის ორიგინალური სამეცნიერო სტატიები მედიცინის, ბიოლოგიისა და ფარმაციის სფეროში, მიმოხილვითი ხასიათის სტატიები.

ჟურნალი ინდექსირებულია MEDLINE-ის საერთაშორისო სისტემაში, ასახულია SCOPUS-ის, PubMed-ის და ВИНТИ РАН-ის მონაცემთა ბაზებში. სტატიების სრული ტექსტი ხელმისაწვდომია EBSCO-ს მონაცემთა ბაზებშიდან.

WEBSITE

www.geomednews.com

К СВЕДЕНИЮ АВТОРОВ!

При направлении статьи в редакцию необходимо соблюдать следующие правила:

1. Статья должна быть представлена в двух экземплярах, на русском или английском языках, напечатанная через **полтора интервала на одной стороне стандартного листа с шириной левого поля в три сантиметра**. Используемый компьютерный шрифт для текста на русском и английском языках - **Times New Roman (Кириллица)**, для текста на грузинском языке следует использовать **AcadNusx**. Размер шрифта - **12**. К рукописи, напечатанной на компьютере, должен быть приложен CD со статьей.

2. Размер статьи должен быть не менее десяти и не более двадцати страниц машинописи, включая указатель литературы и резюме на английском, русском и грузинском языках.

3. В статье должны быть освещены актуальность данного материала, методы и результаты исследования и их обсуждение.

При представлении в печать научных экспериментальных работ авторы должны указывать вид и количество экспериментальных животных, применявшиеся методы обезболивания и усыпления (в ходе острых опытов).

4. К статье должны быть приложены краткое (на полстраницы) резюме на английском, русском и грузинском языках (включающее следующие разделы: цель исследования, материал и методы, результаты и заключение) и список ключевых слов (key words).

5. Таблицы необходимо представлять в печатной форме. Фотокопии не принимаются. **Все цифровые, итоговые и процентные данные в таблицах должны соответствовать таковым в тексте статьи**. Таблицы и графики должны быть озаглавлены.

6. Фотографии должны быть контрастными, фотокопии с рентгенограмм - в позитивном изображении. Рисунки, чертежи и диаграммы следует озаглавить, пронумеровать и вставить в соответствующее место текста **в tiff формате**.

В подписях к микрофотографиям следует указывать степень увеличения через окуляр или объектив и метод окраски или импрегнации срезов.

7. Фамилии отечественных авторов приводятся в оригинальной транскрипции.

8. При оформлении и направлении статей в журнал МНГ просим авторов соблюдать правила, изложенные в «Единых требованиях к рукописям, представляемым в биомедицинские журналы», принятых Международным комитетом редакторов медицинских журналов - <http://www.spinesurgery.ru/files/publish.pdf> и http://www.nlm.nih.gov/bsd/uniform_requirements.html В конце каждой оригинальной статьи приводится библиографический список. В список литературы включаются все материалы, на которые имеются ссылки в тексте. Список составляется в алфавитном порядке и нумеруется. Литературный источник приводится на языке оригинала. В списке литературы сначала приводятся работы, написанные знаками грузинского алфавита, затем кириллицей и латиницей. Ссылки на цитируемые работы в тексте статьи даются в квадратных скобках в виде номера, соответствующего номеру данной работы в списке литературы. Большинство цитированных источников должны быть за последние 5-7 лет.

9. Для получения права на публикацию статья должна иметь от руководителя работы или учреждения визу и сопроводительное отношение, написанные или напечатанные на бланке и заверенные подписью и печатью.

10. В конце статьи должны быть подписи всех авторов, полностью приведены их фамилии, имена и отчества, указаны служебный и домашний номера телефонов и адреса или иные координаты. Количество авторов (соавторов) не должно превышать пяти человек.

11. Редакция оставляет за собой право сокращать и исправлять статьи. Корректур авторам не высылаются, вся работа и сверка проводится по авторскому оригиналу.

12. Недопустимо направление в редакцию работ, представленных к печати в иных издательствах или опубликованных в других изданиях.

При нарушении указанных правил статьи не рассматриваются.

REQUIREMENTS

Please note, materials submitted to the Editorial Office Staff are supposed to meet the following requirements:

1. Articles must be provided with a double copy, in English or Russian languages and typed or computer-printed on a single side of standard typing paper, with the left margin of 3 centimeters width, and 1.5 spacing between the lines, typeface - **Times New Roman (Cyrillic)**, print size - 12 (referring to Georgian and Russian materials). With computer-printed texts please enclose a CD carrying the same file titled with Latin symbols.

2. Size of the article, including index and resume in English, Russian and Georgian languages must be at least 10 pages and not exceed the limit of 20 pages of typed or computer-printed text.

3. Submitted material must include a coverage of a topical subject, research methods, results, and review.

Authors of the scientific-research works must indicate the number of experimental biological species drawn in, list the employed methods of anesthetization and soporific means used during acute tests.

4. Articles must have a short (half page) abstract in English, Russian and Georgian (including the following sections: aim of study, material and methods, results and conclusions) and a list of key words.

5. Tables must be presented in an original typed or computer-printed form, instead of a photocopied version. **Numbers, totals, percentile data on the tables must coincide with those in the texts of the articles.** Tables and graphs must be headed.

6. Photographs are required to be contrasted and must be submitted with doubles. Please number each photograph with a pencil on its back, indicate author's name, title of the article (short version), and mark out its top and bottom parts. Drawings must be accurate, drafts and diagrams drawn in Indian ink (or black ink). Photocopies of the X-ray photographs must be presented in a positive image in **tiff format**.

Accurately numbered subtitles for each illustration must be listed on a separate sheet of paper. In the subtitles for the microphotographs please indicate the ocular and objective lens magnification power, method of coloring or impregnation of the microscopic sections (preparations).

7. Please indicate last names, first and middle initials of the native authors, present names and initials of the foreign authors in the transcription of the original language, enclose in parenthesis corresponding number under which the author is listed in the reference materials.

8. Please follow guidance offered to authors by The International Committee of Medical Journal Editors guidance in its Uniform Requirements for Manuscripts Submitted to Biomedical Journals publication available online at: http://www.nlm.nih.gov/bsd/uniform_requirements.html
http://www.icmje.org/urm_full.pdf

In GMN style for each work cited in the text, a bibliographic reference is given, and this is located at the end of the article under the title "References". All references cited in the text must be listed. The list of references should be arranged alphabetically and then numbered. References are numbered in the text [numbers in square brackets] and in the reference list and numbers are repeated throughout the text as needed. The bibliographic description is given in the language of publication (citations in Georgian script are followed by Cyrillic and Latin).

9. To obtain the rights of publication articles must be accompanied by a visa from the project instructor or the establishment, where the work has been performed, and a reference letter, both written or typed on a special signed form, certified by a stamp or a seal.

10. Articles must be signed by all of the authors at the end, and they must be provided with a list of full names, office and home phone numbers and addresses or other non-office locations where the authors could be reached. The number of the authors (co-authors) must not exceed the limit of 5 people.

11. Editorial Staff reserves the rights to cut down in size and correct the articles. Proof-sheets are not sent out to the authors. The entire editorial and collation work is performed according to the author's original text.

12. Sending in the works that have already been assigned to the press by other Editorial Staffs or have been printed by other publishers is not permissible.

**Articles that Fail to Meet the Aforementioned
Requirements are not Assigned to be Reviewed.**

ავტორთა საქურაღებოლ!

რედაქციაში სტატიის წარმოდგენისას საჭიროა დაიცვათ შემდეგი წესები:

1. სტატია უნდა წარმოადგინოთ 2 ცალად, რუსულ ან ინგლისურ ენებზე დაბეჭდილი სტანდარტული ფურცლის 1 გვერდზე, 3 სმ სიგანის მარცხენა ველისა და სტრიქონებს შორის 1,5 ინტერვალის დაცვით. გამოყენებული კომპიუტერული შრიფტი რუსულ და ინგლისურენოვან ტექსტებში - **Times New Roman (Кириллица)**, ხოლო ქართულენოვან ტექსტში საჭიროა გამოვიყენოთ **AcadNusx**. შრიფტის ზომა – 12. სტატიას თან უნდა ახლდეს CD სტატიით.

2. სტატიის მოცულობა არ უნდა შეადგენდეს 10 გვერდზე ნაკლებს და 20 გვერდზე მეტს ლიტერატურის სიის და რეზიუმეების (ინგლისურ, რუსულ და ქართულ ენებზე) ჩათვლით.

3. სტატიაში საჭიროა გაშუქდეს: საკითხის აქტუალობა; კვლევის მიზანი; საკვლევი მასალა და გამოყენებული მეთოდები; მიღებული შედეგები და მათი განსჯა. ექსპერიმენტული ხასიათის სტატიების წარმოდგენისას ავტორებმა უნდა მიუთითონ საექსპერიმენტო ცხოველების სახეობა და რაოდენობა; გაუტკივარებისა და დაძინების მეთოდები (მწვავე ცდების პირობებში).

4. სტატიას თან უნდა ახლდეს რეზიუმე ინგლისურ, რუსულ და ქართულ ენებზე არანაკლებ ნახევარი გვერდის მოცულობისა (სათაურის, ავტორების, დაწესებულების მითითებით და უნდა შეიცავდეს შემდეგ განყოფილებებს: მიზანი, მასალა და მეთოდები, შედეგები და დასკვნები; ტექსტუალური ნაწილი არ უნდა იყოს 15 სტრიქონზე ნაკლები) და საკვანძო სიტყვების ჩამონათვალი (key words).

5. ცხრილები საჭიროა წარმოადგინოთ ნაბეჭდი სახით. ყველა ციფრული, შემაჯამებელი და პროცენტული მონაცემები უნდა შეესაბამებოდეს ტექსტში მოყვანილს.

6. ფოტოსურათები უნდა იყოს კონტრასტული; სურათები, ნახაზები, დიაგრამები - დასათაურებული, დანომრილი და სათანადო ადგილას ჩასმული. რენტგენოგრამების ფოტოასლები წარმოადგინეთ პოზიტიური გამოსახულებით **tiff** ფორმატში. მიკროფოტოსურათების წარწერებში საჭიროა მიუთითოთ ოკულარის ან ობიექტივის საშუალებით გადიდების ხარისხი, ანათალების შედეგის ან იმპრეგნაციის მეთოდი და აღნიშნოთ სურათის ზედა და ქვედა ნაწილები.

7. სამამულო ავტორების გვარები სტატიაში აღინიშნება ინიციალების თანდართვით, უცხოურისა – უცხოური ტრანსკრიპციით.

8. სტატიას თან უნდა ახლდეს ავტორის მიერ გამოყენებული სამამულო და უცხოური შრომების ბიბლიოგრაფიული სია (ბოლო 5-8 წლის სიღრმით). ანბანური წყობით წარმოდგენილ ბიბლიოგრაფიულ სიაში მიუთითეთ ჯერ სამამულო, შემდეგ უცხოელი ავტორები (გვარი, ინიციალები, სტატიის სათაური, ჟურნალის დასახელება, გამოცემის ადგილი, წელი, ჟურნალის №, პირველი და ბოლო გვერდები). მონოგრაფიის შემთხვევაში მიუთითეთ გამოცემის წელი, ადგილი და გვერდების საერთო რაოდენობა. ტექსტში კვადრატულ ფხიხლებში უნდა მიუთითოთ ავტორის შესაბამისი N ლიტერატურის სიის მიხედვით. მიზანშეწონილია, რომ ციტირებული წყაროების უმეტესი ნაწილი იყოს 5-6 წლის სიღრმის.

9. სტატიას თან უნდა ახლდეს: ა) დაწესებულების ან სამეცნიერო ხელმძღვანელის წარდგინება, დამოწმებული ხელმოწერითა და ბეჭდით; ბ) დარგის სპეციალისტის დამოწმებული რეცენზია, რომელშიც მითითებული იქნება საკითხის აქტუალობა, მასალის საკმაობა, მეთოდის სანდოობა, შედეგების სამეცნიერო-პრაქტიკული მნიშვნელობა.

10. სტატიის ბოლოს საჭიროა ყველა ავტორის ხელმოწერა, რომელთა რაოდენობა არ უნდა აღემატებოდეს 5-ს.

11. რედაქცია იტოვებს უფლებას შეასწოროს სტატია. ტექსტზე მუშაობა და შეჯერება ხდება საავტორო ორიგინალის მიხედვით.

12. დაუშვებელია რედაქციაში ისეთი სტატიის წარდგენა, რომელიც დასაბეჭდად წარდგენილი იყო სხვა რედაქციაში ან გამოქვეყნებული იყო სხვა გამოცემებში.

აღნიშნული წესების დარღვევის შემთხვევაში სტატიები არ განიხილება.

Yaomin Luo, Xin Chen, Enhao Hu, Lingling Wang, Yuxuan Yang, Xin Jiang, Kaiyuan Zheng, Li Wang, Jun Li, Yanlin Xu, Yin Xu Wang, Yulei Xie. TRANSCRIPTOME ANALYSIS REVEALED THE MOLECULAR SIGNATURES OF CISPLATIN-FLUOROURACIL COMBINED CHEMOTHERAPY RESISTANCE IN GASTRIC CANCER.....	6-18
Abramidze Tamar, Bochorishvili Ekaterine, Melikidze Natela, Dolidze Nana, Chikhelidze Natia, Chitadze Nazibrola, Getia Vladimer, Gotua Maia, Gamkrelidze Amiran. RELATIONSHIP OF ALLERGIC DISEASES, POLLEN EXPOSURE AND COVID-19 IN GEORGIA.....	19-26
Ibtisam T. Al-Jureisy, Rayan S. Hamed, Ghada A. Taqa. THE BIO-STIMULATORY EFFECT OF ADVANCE PLATELET RICH FIBRIN COMBINED WITH LASER ON DENTAL IMPLANT STABILITY: AN EXPERIMENTAL STUDY ON SHEEP.....	27-31
Amandeep Singh, Navnath Sathe, Kanchan Rani, Saumya Das, Devanshu J. Patel, Renuka Jyothi R. IMPACT OF MOTHER'S HYPOTHYROIDISM ON FETAL DEVELOPMENT AND OUTCOMES: A SYSTEMATIC REVIEW.....	32-36
Sevil Karagül, Sibel Kibar, Saime Ay, Deniz Evcik, Süreyya Ergin. THE EFFECT OF A 6-WEEK BALANCE EXERCISE PROGRAM ON BALANCE PARAMETERS IN FRAILTY SYNDROME: A RANDOMIZED CONTROLLED, DOUBLE-BLIND, PROSPECTIVE STUDY.....	37-42
Zainab Suleiman Erzaq, Fahmi S. Ameen. COMPARISON BETWEEN PCR STUDY AND ELISA STUDY AMONG PATIENTS WITH DIARRHEA.....	43-47
Igor Morar, Oleksandr Ivashchuk, Ivan Hushul, Volodymyr Bodiaka, Alona Antoniv, Inna Nykolaichuk. THE INFLUENCE OF THE ONCOLOGICAL PROCESS ON THE MECHANICAL STRENGTH OF THE POSTOPERATIVE SCAR OF THE LAPAROTOMY WOUND.....	48-51
Lyazzat T. Yeraliyeva, Assiya M. Issayeva, Malik M. Adenov. COMPARATIVE ANALYSIS OF MORTALITY FROM TUBERCULOSIS AMONG COUNTRIES OF FORMER SOVIET UNION.....	52-57
Rana R. Khalil, Hayder A.L. Mossa, Mufeda A. Jwad. MITOFUSIN 1 AS A MARKER FOR EMBRYO QUALITY AND DEVELOPMENT IN RELEVANCE TO ICSI OUTCOME IN INFERTILE FEMALES.....	58-61
Geetika M. Patel, Nayana Borah, Bhupendra Kumar, Ritika Rai, V. K. Singh, Chandana Maji. MEDITERRANEAN DIET AND ITS IMPACT ON THE ILLNESS CHARACTERISTIC OF YOUTH WITH IRRITABLE BOWEL CONDITION.....	62-66
Ketevan Arabidze, Irakli Gogokhia, Khatuna Sokhadze, Nana Kintsurashvili, Mzia Tsiklauri, Tamar Gogichaishvili, Iamze Tabordze. THE EVALUATION OF THE RISK OF COMPLICATIONS DURING MULTIMODAL AND OPIOID ANESTHESIA IN BARIATRIC SURGERY AND ABDOMINOPLASTY.....	67-71
Hadeer Sh Ibrahim, Raghad A Al-Askary. MARGINAL FITNESS OF BIOACTIVE BULKFILL RESTORATIONS TO GINGIVAL ENAMEL OF CLASS II CAVITIES: AN IN VITRO COMPARATIVESTUDY.....	72-79
Lobashova O.I, Nasibullin B.A, Baiazitov D.M, Kashchenko O.A, Koshelnyk O.L, Tregub T.V, Kovalchuk L.Y, Chekhovska G.S, Kachailo I.A, Gargin V.V. PECULIARITIES OF THE ORGANS OF THE REPRODUCTIVE SYSTEM OF WOMEN OF REPRODUCTIVE AGE WITH LIVER DYSFUNCTION UNDER THE INFLUENCE OF EXOGENOUS POLLUTANTS.....	80-86
Victoriia Ivano. EXPLORING NEONATAL HEALTH DISPARITIES DEPENDED ON TYPE OF ANESTHESIA: A NARRATIVE REVIEW.....	87-93
Omar B. Badran, Waleed G. Ahmad. THE COVID-19 PANDEMIC LOCKDOWN'S IMPACT ON ROUTINE CHILDHOOD VACCINATION.....	94-98
Valbona Ferizi, Lulëjeta Ferizi Shabani, Merita Krasniqi Selimi, Venera Bimbashi, Merita Kotori, Shefqet Mrasori. POSTNATAL CARE AMONG POSTPARTUM WOMEN DURING HOSPITAL DISCHARGE.....	99-104
Devanshu J. Patel, Asha.K, Amandeep Singh, Sakshi Vats, Prerana Gupta, Monika. A LONGITUDINAL STUDY OF CHILDHOOD SEPARATION ANXIETY DISORDER AND ITS IMPLICATIONS FOR ADOLESCENT PSYCHOPATHOLOGY.....	105-111
Kachanov Dmitrii A, Artsygov Murad M, Omarov Magomed M, Kretova Veronika E, Zhur Daniil V, Chermoew Magomed M, Yakhyaev Adam I, Mazhidov Arbi S, Asuev Zaurbek M, Bataev Ahmed R, Khasuev Turpal-Ali B, Rasulov Murad N. COMPARATIVE ANALYSIS OF THE EFFECTS OF SOME HEPATOPROTECTORS IN EXPERIMENTALLY INDUCED MAFLD IN ADULT WISTAR RATS.....	112-115
Nada J Alwan, Raghad A Al-Askary. EVALUATION OF INTERFACIAL ADAPTATION BETWEEN VARIOUS TYPES OF FIBER POSTS AND RESIN CEMENTS USING	

MICRO CT: AN IN VITRO COMPARATIVE STUDY.....	116-121
Anish Prabhakar, Vinod Mansiram Kapse, Geetika M. Patel, Upendra Sharma. U.S, Amandeep Singh, Anil Kumar. EMERGING NATIONS' LEARNING SYSTEMS AND THE COVID-19 PANDEMIC: AN ANALYSIS.....	122-127
Tereza Azatyan. THE STUDY OF SPATIAL REPRESENTATIONS OF CHILDREN WITH DIFFERENT DEGREES OF INTERHEMISPHERIC INTERACTION.....	128-132
Sefineh Fenta Feleke, Anteneh Mengsit, Anteneh Kassa, Melsew Dagne, Tiruayehu Getinet, Natnael Kebede, Misganaw Guade, Mulat Awoke, Genanew Mulugeta, Zeru Seyoum, Natnael Amare. DETERMINANTS OF PRETERM BIRTH AMONG MOTHERS WHO GAVE BIRTH AT A REFERRAL HOSPITAL, NORTHWEST ETHIOPIA: UNMATCHED CASE- CONTROL STUDY.....	133-139
Himanshi Khatri, Rajeev Pathak, Ranjeet Yadav, Komal Patel, Renuka Jyothi. R, Amandeep Singh. DENTAL CAVITIES IN PEOPLE WITH TYPE 2 DIABETES MELLITUS: AN ANALYSIS OF RISK INDICATORS.....	140-145
Mukaddes Pala. ExerciseandMicroRNAs.....	146-153
Zurab Alkhanishvili, Ketevan Gogilashvili, Sopia Samkharadze, Landa Lursmanashvili, Nino Gvasalia, Lika Gogilashvili. NURSES' AWARENESS AND ATTITUDES TOWARDS INFLUENZA VACCINATION: A STUDY IN GEORGIA.....	154-159
Aveen L. Juma, Ammar L. Hussein, Israa H. Saadon. THE ROLE OF COENZYME COQ10 AND VITAMIN E IN PATIENTS WITH BETA-THALASSEMIA MAJOR IN BAGHDAD CITY POPULATION.....	160-162
Merve Karli, Basri Cakiroglu. ADRENAL METASTASIS OF BILATERAL RENAL CELL CARCINOMA: A CASE PRESENTATION 12 YEARS AFTER DIAGNOSIS.....	163-165
Manish Kumar Gupta, Shruti Jain, Priyanka Chandani, Devanshu J. Patel, Asha K, Bhupendra Kumar. ANXIETY SYNDROMES IN ADOLESCENTS WITH OPERATIONAL RESPIRATORY CONDITIONS: A PROSPECTIVE STUDY.....	166-171
Mordanov O.S, Khabadze Z.S, Meremkulov R.A, Saeidyan S, Golovina V, Kozlova Z.V, Fokina S.A, Kostinskaya M.V, Eliseeva T.A. EFFECT OF SURFACE TREATMENT PROTOCOLS OF ZIRCONIUM DIOXIDE MULTILAYER RESTORATIONS ON FUNCTIONAL PROPERTIES OF THE HUMAN ORAL MUCOSA STROMAL CELLS.....	172-177
Nandini Mannadath, Jayan. C. EFFECT OF BIOPSYCHOSOCIAL INTERVENTION ON BEAUTY SATISFACTION AFTER STAGED SURGERY AMONG ADOLESCENTS WITH ORAL FACIAL CLEFTS.....	178-182
Bhupendra Kumar, Sonia Tanwar, Shilpa Reddy Ganta, Kumud Saxena, Komal Patel, Asha K. INVESTIGATING THE EFFECT OF NICOTINE FROM CIGARETTES ON THE GROWTH OF ABDOMINAL AORTIC ANEURYSMS: REVIEW.....	183-188
Musheghyan G.Kh, Gabrielyan I.G, Poghosyan M.V, Arajyan G.M. Sarkissian J.S. SYNAPTIC PROCESSES IN PERIAQUEDUCTAL GRAY UNDER ACTIVATION OF LOCUS COERULEUS IN A ROTENONE MODEL OF PARKINSON'S DISEASE.....	189-195
Bhupendra Kumar, Barkha Saxena, Prerana Gupta, Raman Batra, Devanshu J. Patel, Kavina Ganapathy. EFFECTS OF SOCIAL ESTRANGEMENT ON YOUNG PEOPLE'S MATURATION: A REVIEW OF THE RESEARCH.....	196-202
Mordanov O.S, Khabadze Z.S, Meremkulov R.A, Mordanova A.V, Saeidyan S, Golovina V, Kozlova Z.V, Fokina S.A, Kostinskaya M.V, Eliseeva T.A. COMPARATIVE SPECTROPHOTOMETRY ANALYSIS OF ZIRCONIUM DIOXIDE WITH THE CUBIC AND TETRAGONAL PHASE AFTER ARTIFICIAL AGING.....	203-210
Mohammed Abidullah, Sarepally Godvine, Swetcha Seethamsetty, Geetika Gorrepati, Pradeep Koppolu, Valishetty Anuhya, Sana vakeel. EFFECT OF GOAL-ORIENTEDPATIENT CENTRIC HEALTH CARE PROFESSIONAL INTERVENTION ON BLOOD GLUCOSE CONTROL INTYPE 2 DIABETES MELLITUSANDLEVEL OF PATIENT SATISFACTION.....	211-217

ADRENAL METASTASIS OF BILATERAL RENAL CELL CARCINOMA: A CASE PRESENTATION 12 YEARS AFTER DIAGNOSIS

Merve Karli¹, Basri Cakiroglu¹.

¹Hisar Intercontinental Hospital, Turkey.

Abstract.

This case presentation describes the scenario of a patient diagnosed with renal cell carcinoma (RCC) who remained asymptomatic for an extended follow-up period, only to develop adrenal metastasis. Despite a 12-year surveillance period without any evidence of recurrence or metastasis, subsequent investigations revealed the presence of rectosigmoid colon cancer and adrenal metastasis. This case highlights the insidious and aggressive nature of RCC, emphasizing the significance of early detection and regular monitoring for metastatic disease.

Key words. Adrenal, bilateral, metastasis, rectosigmoid colon cancer, renal cell carcinoma.

Introduction.

Among all cancer types worldwide, renal cell carcinoma (RCC) accounts for approximately 2-3% of cases and is known to have the potential to metastasize to almost any organ [1]. The most common sites of metastasis are the lungs (50-60%), liver (30-40%), bones (30-40%), and brain (5%) [2]. However, the likelihood of adrenal metastasis is relatively low. Although surgical treatment of metastases from RCC is preferred and contributes to survival rates, managing such cases is considered challenging. Renal cell carcinoma (RCC) is known to metastasize in approximately 20-40% of patients after radical nephrectomy [3]. Although surgical treatment of metastases from RCC is preferred and contributes to the improvement of survival rates, managing such cases is considered challenging [4]. This case presentation aims to introduce a patient who was diagnosed with kidney cancer 12 years ago and underwent bilateral nephron sparing surgery. Throughout the follow-up period, no recurrence or metastasis was observed. However, in the past 2 months, the patient presented with symptoms that led to investigations revealing rectosigmoid colon cancer and an adrenal mass.

Case presentation.

A 72-year-old male patient underwent bilateral nephron-sparing surgery for renal cell carcinoma (RCC) 12 years ago. The postoperative pathology analysis revealed Grade II Fuhrman nuclear characteristics, with no pelvicalyceal or vascular invasion, and the tumor was confined within the capsule (pT1bN0M0). The size of the tumor was 3 cm in the lower pole of the right kidney, with a 3 mm distance from the surgical margin, and approximately 3.5 cm in diameter in the middle pole of the left kidney, with a 3 mm distance from the surgical margin. The patient received adjuvant xelox+pembrolizumab treatment during this period. Regular follow-up was conducted with PET-CT and CT scans every 6 months and later annually to monitor for recurrence and metastasis. No signs of recurrence or metastasis were observed throughout the 12-year follow-up.

In March 2023, the patient underwent colonoscopy due

to frequent bowel movements, which revealed a mass lesion encircling the lumen at the level of the rectosigmoid junction, causing difficulty in the passage of the colonoscope. The pathological examination of the mass confirmed it as adenocarcinoma. The patient's PET-CT scan showed a malignant lesion in the rectosigmoid region (Figure 1), nodular lesions with increased FDG uptake in both lungs, a malignant lesion in the left adrenal gland (Figure 2), and nodular lesions with increased FDG uptake in the pelvic region consistent with mesenteric involvement. A CT scan also detected a localized fusiform-shaped mass lesion in the left adrenal gland measuring 30*22 mm (Figure 3), which was initially considered a metastasis and a mass in the rectosigmoid lesion (Figure 4). Preoperative tests, including renin activity, dopamine, aldosterone, normetanephrine, metanephrine, and 1 and 2 mg dexamethasone suppression and urine tests, indicated that the mass was not hormone active. Serosal involvement of a mass lesion at the rectosigmoid colon level and a 12 mm diameter lymph node in the common iliac lymphatic chain suggestive of metastatic lymph node were observed. The patient's case was discussed in a multidisciplinary oncology council, and due to the obstructive nature of the mass, a decision was made to perform surgery. The patient underwent low anterior resection + diverting loop ileostomy + left adrenalectomy. Intraoperatively, it was observed that the mass completely obstructed the lumen

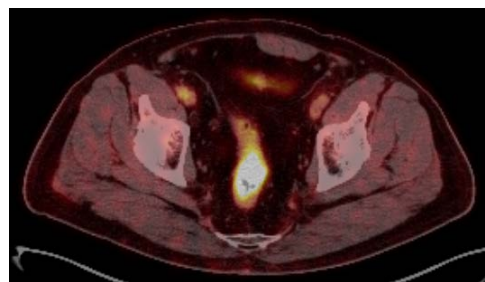


Figure 1. PET-CT scan, malignant mass in the rectosigmoid region.

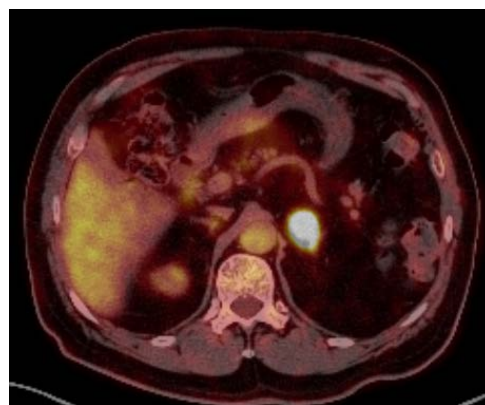


Figure 2. PET-CT scan, malignant mass in the left adrenal gland.



Figure 3. CT scan, mass in the left adrenal gland.



Figure 4. CT scan, in the rectosigmoid region.

and the intestinal segments proximal to the mass were dilated. The patient was discharged on the 6th day postoperatively in a healed condition. The pathology results indicated T3N1 adenocarcinoma for the colon and clear cell type renal cell carcinoma metastasis for the adrenal gland. Postoperative adjuvant oncology treatment with pembrolizumab and XELOX (oxaliplatin + oral capecitabine) is ongoing. The pathological findings are consistent with the initial pathology report of kidney cancer, suggesting that the renal cancer metastasized to the adrenal glands at an advanced stage and remained asymptomatic for a long period of time.

Discussion.

RCC is one of the most deadly tumors of the urological system. The five-year survival rate for all stages is approximately 69% [5]. Whether synchronous or metachronous, it is a tumor with a high metastatic potential, and the most common distant metastasis sites are the lungs, bones, liver, lymph nodes, adrenal glands, and brain [2,6].

One-third of cases present with synchronous metastasis at the time of diagnosis. Approximately 30% of cases will develop late-stage metastatic disease, sometimes even ten years after nephrectomy [7]. The biological mechanism of adrenal metastasis remains uncertain, with several theories suggesting that, like metastasis occurring in other organs, it is hematogenously mediated. However, some autopsy studies suggest that it may actually be dependent on the size and blood flow of the organ. Some studies also indicate the "seed and soil" theory, suggesting that the contralateral adrenal gland may have a closer proximity to tumor cells and create a favorable environment for its development within itself rather than in other organs [8,9].

A study has suggested that some adrenal metastases in patients treated with radical nephrectomy are inadequately diagnosed due to their generally asymptomatic nature, both functionally and anatomically [1]. Imaging techniques can assist in determining the location of the mass, but they often fail to differentiate whether an adrenal tumor is a primary adrenocortical carcinoma, benign adenoma, or renal tumor metastasis [10]. Therefore, in patients with adrenal lesions detected on radiological examination after radical nephrectomy, hormonal investigation is recommended. If hormone levels are normal, a PET/CT scan can aid in the clinical diagnosis. A high radiological uptake ratio in relation to normal hormone test results suggests a metastatic lesion [11].

This case presentation highlights the importance of early detection and regular monitoring of adrenal metastasis, which demonstrates the aggressive and insidious nature of RCC. The patient's fortunate 12-year asymptomatic period without evidence of metastasis or recurrence emphasizes the ability of RCC's metastatic potential to remain silent for an extended period, potentially escaping detection until symptoms arise.

Furthermore, this case underscores the rarity of adrenal metastasis as a complication of RCC. Although the frequency of RCC metastasizing to the adrenal glands is generally low, the potential for metastasis should always be considered. Therefore, regular follow-up and screening tests are crucial for patients with RCC. Imaging modalities such as annual PET-CT and CT scans can serve as valuable tools for the early detection of potential metastases [12].

This case presentation also emphasizes the importance of a multidisciplinary approach. The management of RCC patients requires collaboration among urologists, oncologists, radiologists, and pathologists, among other healthcare professionals. This collaborative effort ensures that patients receive the most appropriate diagnosis and treatment, leading to optimal outcomes.

Lastly, this case presentation highlights the significance of advancements in RCC treatment and the potential benefits of novel therapeutic approaches such as immunotherapy. Immunotherapy agents can be effective in combating metastatic forms of RCC and extending patients' survival. However, further research and clinical trials are needed to better understand the efficacy and safety of these treatment strategies.

Conclusion.

This case presentation raises awareness in clinical practice regarding the management and monitoring of adrenal metastasis, a rare complication of RCC. Regular follow-up and screening tests are critical for early diagnosis and treatment of RCC. Additionally, a multidisciplinary approach and novel treatment strategies are necessary to achieve improved clinical outcomes for these patients.

Conflict of interest.

The authors declare no potential conflicts of interest with respect to research, authorship and/or publication of this article.

REFERENCES

1. Campbell S, Uzzo RG, Allaf ME, et al. Renal Mass and Localized Renal Cancer: AUA Guideline. *J Urol.* 2017;198:520-529.

2. Ljungberg B, Albiges L, Bensalah K, et al. EAU Guidelines on Renal Cell Carcinoma: 2021 Update. *Eur Urol.* 2021;79:799-810.
3. Capitanio U, Montorsi F. Renal cancer. *Lancet.* 2016;387:894-906.
4. Öztürk H. Bilateral synchronous adrenal metastases of renal cell carcinoma: a case report and review of the literature. *Oncol Lett.* 2015;9:1897-1901.
5. Robledo AB, Millet SB, Orbis Castellanos JF, et al. Metastasis of the gallbladder in clear cell renal carcinoma. *Oncol Lett.* 2012;3:1136-1138.
6. Ueda I, Aoki T, Oki H, et al. Gallbladder metastasis from renal cell carcinoma: a case report with review of the literature. *Magn. Reson. Med. Sci.* 2015;14:133-138.
7. Costa Neves M, Neofytou K, Giakoustidis A, et al. Two cases of gallbladder metastasis from renal cell carcinoma and review of literature. *World J Surg Oncol.* 2016;14:87.
8. Staehler M, Haseke N, Stadler T, et al. Adrenal metastases from renal cell carcinoma: impact of surgical treatment. *Urol Int.* 2005;74:108-113.
9. Utsumi T, Suzuki H, Nakamura K, et al. Renal cell carcinoma with a huge solitary metastasis to the contralateral adrenal gland: a case report. *Int J Urol.* 2008;15:1077-1079.
10. Choyke PL, Glenn GM, Walther MM, et al. von Hippel-Lindau disease: genetic, clinical, and imaging features. *Radiology.* 1995;194:629-642.
11. Albano D, Agnello F, Midiri F, et al. Imaging features of adrenal masses. *Insights Imaging.* 2019;10:1.
12. Patel HD, Kates M, Pierorazio PM, et al. Survival after diagnosis of localized T1a kidney cancer: current population-based practice of surgery and nonsurgical management. *Urology.* 2014;83:126-132.